

# SMT Products

実装



株式  
会社

東京製作所  
TOKYO SEISAKUSHO



We are Parts Manufacturer

**P**artner  
**A**dvice  
**R**evolution  
**T**echnology  
**S**ervice

## Company outline

Company name	TOKYO SEISAKUSHO CO., LTD.
Head office	3-25-10 Kamiya, Kita-ku, Tokyo 115-0043 Japan
Established	6th July 1956
President	Takayuki Koike 「古池 隆行」

## History

1956	Tokyo Seisakusho Co., Ltd. established and began sales of news paper printing knives and parts.
1977	Successful of manufacturing and sale Doctor Blade in Japan
1990	Manufacturing lead cutter of radial components parts for Auto Insertion machine
1998	Construction of Komagane factory in Nagano prefecture, Japan
2014	Established 「TS Corporation (Asia) Co., Ltd.」 sales in Thailand
2015	Established 「Tokyo Seisakusho (Asia) Co., Ltd.」 manufacturing in Thailand
2017	Established 「Tokyo Seisakusho Vietnam Co., Ltd.」 sales in Ho Chi Minh, Vietnam
	Established 「SHANGHAI TS TRADING CO., LTD.」 sales in Shanghai, China

## Factory facilities

1. NC lathe	TSUGAMI
2. Precision machining center	MAKINO
3. Precision NC electrical discharge machine	MAKINO
4. Small hole wire electrical discharge machine	MAKINO
5. Horizontal wire electrical discharge machine	MAKINO
6. Vertical NC milling machine	OKK
7. Surface grinding machine	OKAMOTO
8. Rotary surface grinding machine	AMADA
9. Cylindric grinding machine	KONDO
10. Inside grinding machine	OKAMOTO
11. Vertical automatic grinder	OKAMOTO
12. Laser marker	KEYENCE

## Inspection equipments

1. Rockwell hardness testing machine	MITSUTOYO
2. Micro vickers hardness testing machine	MITSUTOYO
3. Ultra high accuracy CNC 3D-CMM	MITSUTOYO
4. Digital microscope	KEYENCE
5. CCD digital microscope	MORITEX
6. Laser roughness measurement surf test	KEYENCE
7. Surface roughness measurement	TOKYO SANGYO
8. Image measuring instrument	KEYENCE
9. Microscope (measurement)	TOPCON
10. Gas flow meter (Nozzle)	TOKYO SEISAKUSHO



# PANASONIC CM/NPM 12H/16H SERIES NOZZLE

Parts Number (Panasonic)	Parts Number (Tokyo Seisakusho)	Parts Name	Nozzle Size (mm)	Note	
				Material	Components
	924-CM12H-256CS (924-CM12H-203ZS)	256CS Nozzle	0.3 × 0.4	Ceramic	0402
N610017370AC	924-CM12H-205CS	205S Nozzle	0.35 × 0.65	Ceramic	0603
N610030510AC	924-CM12H-206AS	206AS Nozzle	0.6 × 0.5	Ceramic	0603 1005
N610040786AA	924-CM12H-225CS	225CS Nozzle	0.35 × 0.6	Ceramic	0603
N610040787AA	924-CM12H-226CS	226CS Nozzle	0.5 × 0.6	Ceramic	0603 1005
N610040788AA	924-CM12H-230CS	230CS Nozzle	0.6 × 1.0	Ceramic	1005 1608
N610043815AA	924-CM12H-235CS	235CS Nozzle	0.84 × 1.6	Ceramic	1608 ~ 3216
N610040853AA	924-CM12H-240CS	240CS Nozzle	φ2.4 × 1.8	Ceramic	3225 4532
N610017371ACC	924-CM12H-110S	110S Nozzle	φ0.6 × φ0.45	Steel	1005 1608
	924-CM12H-110CS	110CS Nozzle (Ceramic)	φ0.6 × φ0.45	Ceramic	1005 1608
N610017372ACC	924-CM12H-115AS	115AS Nozzle	φ0.9 × φ0.6	Steel	1608 2012
	924-CM12H-115CS	115CS Nozzle (Ceramic)	φ0.9 × φ0.6	Ceramic	1608 2012
N610017373AC	924-CM12H-120S	120S Nozzle	φ1.3 × φ0.9	Steel	2012 3216
	924-CM12H-120CS	120CS Nozzle (Ceramic)	φ1.3 × φ0.9	Ceramic	2012 3216
N610017375AC	924-CM12H-130S	130S Nozzle	φ2.4 × φ1.8	Steel	3225 4532
N610017376AC	924-CM12H-140S	140S Nozzle	φ4.0 Pad	Pad	Capacitor



# PANASONIC CM/NPM 8H SERIES NOZZLE

Parts Number (Panasonic)	Parts Number (Tokyo Seisakusho)	Parts Name	Nozzle Size (mm)	Note	
				Material	Components
	924-CM8H-256C	256C Nozzle	0.5 × 0.4	Ceramic	0402
N610000995AA	924-CM8H-205C	205C Nozzle	0.35 × 0.65	Ceramic	0603
KXFX05V2A00	924-CM8H-206A	206A Nozzle	0.6 × 0.5	Ceramic	0603 1005
N610040782AB	924-CM8H-225C	225C Nozzle	0.35 × 0.6	Ceramic	0603
N610040783AB	924-CM8H-226C	226C Nozzle	0.5 × 0.6	Ceramic	0603 1005
N610040784AB	924-CM8H-230C	230C Nozzle	0.6 × $\phi$ 1.0	Ceramic	1005 1608
N610040782AB	924-CM8H-235C	235C Nozzle	0.84 × 1.6	Ceramic	1608 ~ 3216
N610062681AB	924-CM8H-240C	240C Nozzle	$\phi$ 2.4 × 1.8	Ceramic	3225 4532
KXFX0383A00	924-CM8H-110	110 Nozzle	$\phi$ 0.6 × $\phi$ 0.45	Steel	1005 1608
	924-CM8H-110C	110CS Nozzle (Ceramic)	$\phi$ 0.6 × $\phi$ 0.45	Ceramic	1005 1608
KXFX037NA00	924-CM8H-115A	115A Nozzle	$\phi$ 0.9 × $\phi$ 0.6	Steel	1608 2012
	924-CM8H-115AC	115CS Nozzle (Ceramic)	$\phi$ 0.9 × $\phi$ 0.6	Ceramic	1608 2012
KXFX0384A00	924-CM8H-120	120 Nozzle	$\phi$ 1.3 × $\phi$ 0.9	Steel	2012 3216
	924-CM8H-120C	120CS Nozzle (Ceramic)	$\phi$ 1.3 × $\phi$ 0.9	Ceramic	2012 3216
KXFX0385A00	924-CM8H-130	130 Nozzle	$\phi$ 2.4 × $\phi$ 1.8	Steel	3225 4532
KXFX0386A00	924-CM8H-140	140 Nozzle	$\phi$ 4.0 Pad	Pad	Capacitor



# PANASONIC CM/NPM 3H SERIES NOZZLE

Parts Number (Panasonic)	Parts Number (Tokyo Seisakusho)	Parts Name	Nozzle Size (mm)	Note	
				Material	Components
KXFX037SA00C	924-CM3H-1001	1001 Nozzle	$\phi 1.3 \times 0.9 / \phi 0.5$	Resin	1005R,C 1608R,C 2012R,C
KXFX037SA00	924-CM3H-1001T	1001 Nozzle Tip			
KXFX037TA00C	924-CM3H-1002	1002 Nozzle	$\phi 3.0 \times 2.2 / \phi 1.5$	Resin	3216R,C 4532R,C Al Capacitor
KXFX037TA00	924-CM3H-1002T	1002 Nozzle Tip			
KXFX037UA00	924-CM3H-1003	1003 Nozzle	$\phi 6.0 / 4.0 \times \phi 3.0$	Steel	SOP BGA
KXFX037VA00	924-CM3H-1004	1004 Nozzle	$\phi 8.0 / \phi 3.5$	Pad	SOP SOJ BGA QFP
	924-CM3H-1004-PAD	1004 Pad only		Pad	
KXFX037WA00	364-CM3H-1005	1005 Nozzle	$\phi 10 / \phi 6$	Pad	SOJ BGA QFP
	924-CM3H-1005-PAD	1005 Pad only		Pad	
KXFX037XA00	924-CM3H-1006	1006 Nozzle			

※ Improved Nozzle 1001 & 1002 : Nozzle Tip ceramic and diamond is available

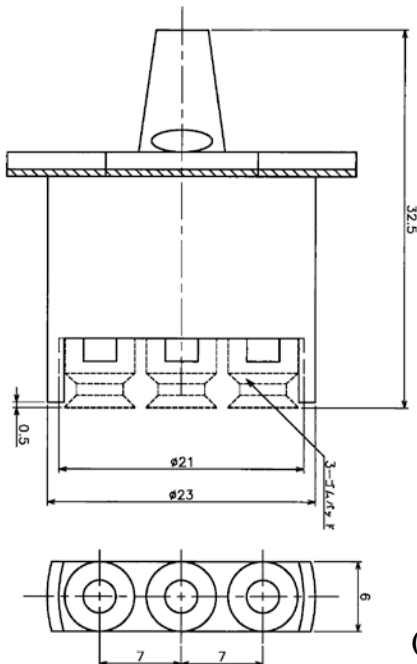
# CM/NPM SPECIAL NOZZLE

Parts Number (TS)	Parts Name	TIP Size	Shape	Note
941-CM3H-1404	1404 Nozzle			22.5mm Rubber Tip
941-CM3H-1421	1421 Nozzle			22.5mm Rubber Tip
941-CM3H-1479	1479 Nozzle			27.5mm Rubber Tip

## SPECIAL NOZZLE (Tokyo Seisakusho Modification)

941-CM3H-GP GRIPPER NOZZLE

Standard shape  
(Not removable)



To customize special nozzle, please provide component parts with embossed tape  
If not available please inform the specification of component parts and embossed tape

TS modification shape  
1001 nozzle body + 5754 tip  
(removable)



#5754 Nozzle (N610124381AA)  
Adsorption power =43.47g



Available for any types of machine  
(Yamaha, Juki, Others machine's brand)

# PANASONIC BM SERIES NOZZLE



Parts Number (Panasonic)	Parts Number (Tokyo Seisakusho)	Parts Name	Nozzle Size (mm)	Note	
				Material	Components
1086288100	921-BM-SX-TIP	SX Nozzle Tip	0.6 × 0.5 0.47 × 0.3	Dia	0603
10862GH810AA	921-BM-SX-SET	SX Nozzle Set			
104590800405	921-BM-SA-TIP	SA Nozzle Tip	1.0 × 0.8 0.55 × 0.78	Dia	1005/1608
10807GH811AG	921-BM-SA-SET	SA Nozzle Set			
104590801405	921-BM-S-TIP	S Nozzle Tip	1.7 × 1.2	Dia	1608 ~ 3216
10807GH812AG	921-BM-S-SET	S Nozzle Set			
104590802405	921-BM-M-TIP	M Nozzle Tip	4 × 3.4	Steel	
10807GH813AF	921-BM-M-SET	M Nozzle Set			
104590821405	921-BM-CNT-S-TIP	CNT S Nozzle Tip	φ7 × 1.5 6 × 0.7	Steel	
104590822405	921-BM-CNT-M-TIP	CNT M Nozzle Tip	φ16 × 2.1 14 × 1.5	Steel	
104701876803	921-BM-PAD-TIP	Pad Holder Tip	φ10 × φ7	Steel	
104708983802	921-BM-PAD-L-TIP	Pad Holder Tip		Steel	
104590813603	921-BM-MELF-TIP	Melf Nozzle Tip		Steel	
R104590802405	921-BM-M-SP-TIP	SP M Nozzle	4 × 3.4	Rubber Tip	
10817S0022	921-BM-BODY- φ4	Nozzle Flange		For φ4	
10817S0033	921-BM-BODY- φ5	Nozzle Flange		For φ5	



# YAMAHA

## YS SERIES NOZZLE

Parts Number (YAMAHA)	Parts Number (Tokyo Seisakusho)	Parts Name	Nozzle Size (mm)	Note	
				Material	Components
KHN-M7710-A4X	927-YS-301A	#301A Nozzle	0.65 × 0.65 0.7 × 0.8	Ceramic	0603/1005
KHN-M7710-A4X-TIP	927-YS-301A-TIP	#301A Nozzle Tip (Tip only)			
KHN-M7720-A3X	927-YS-302A	#302A Nozzle	0.9 × 1.7 1.0 × 1.7	Ceramic	1608 ~ 3216
KHN-M7720-A3X-TIP	927-YS-302A-TIP	#302A Nozzle Tip (Tip only)			
KHN-M7740-A0X	927-YS-303A	#303A Nozzle (314A)	φ4.0 × 2.0	Steel	SOP
KHN-M7750-A0X	927-YS-304A	#304A Nozzle (315A)	φ5.7/O-ring	Steel	QFP (Under □ 32mm)
KHN-M7760-A0X	927-YS-305A	#305A Nozzle (316A)	O-ring	Steel	QFP
	927-YS-306A-MELF	#306A Nozzle (317A)	MELF (Tip V shape)	Steel	Tumber Shape parts
	927-YS-309A	#309A Nozzle	φ1.2 × φ 0.7	Ceramic	
	927-YS-309A-TIP	#309A Nozzle Tip (Tip only)		Ceramic	
KHN-M77A0-A0X	927-YS-310A	#310A Nozzle	0.3 × 0.25 /φ0.18	Ceramic	
KHN-M77A0-A0X-TIP	927-YS-310A-TIP	#310A Nozzle Tip (Tip only)			
KHN-M7710-A3X	927-YS-311A	#311A Nozzle	0.75 × 0.35 /0.18 × 0.35	Ceramic	
KHN-M7710-A3X-TIP	927-YS-311A-TIP	#311A Nozzle Tip (Tip only)			
KHN-M7720-A2X	927-YS-312A	#312A Nozzle	1.2 × 0.45 /0.6 × 0.3	Ceramic	
KHN-M7720-A2X-TIP	927-YS-312A-TIP	#312A Nozzle Tip (Tip only)			





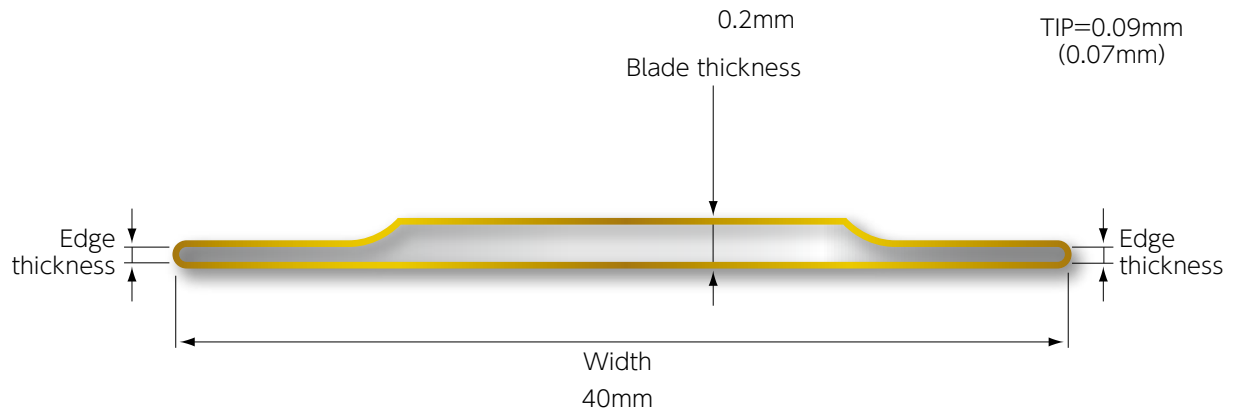
# YAMAHA

## YG200/200X SERIES NOZZLE

Parts Number (YAMAHA)	Parts Number (Tokyo Seisakusho)	Parts Name	Nozzle Size (mm)	Note	
				Material	Components
KGT-M7710-A0XC	927-YG200-201A	#201A Nozzle (Type201A)	0.7 × 0.8	Ceramic	0603 ~ 1005
KGT-M7710-A0XC-TIP	927-YG200-201-T	#201A Nozzle Tip (Tip only)			
KGT-M7720-A0XC	927-YG200-202A	#202A Nozzle (Type202A)	1.0 × 1.7	Ceramic	1608 ~ 3216
KGT-M7720-A0XC-T	927-YG200-202A-T	#202A Nozzle Tip (Tip only)			
KGT-M7730-A0XC	927-YG200-203A	#203A Nozzle (Type203A)	φ 4.0 × 3.0	Ceramic	4532 ~ 7343 Mini Transistor
KGT-M7730-A0XC-T	927-YG200-203A-T	#203A Nozzle Tip (Tip only)			
KGT-M7790-A0XC	927-YG200-209A	#209A Nozzle	φ 1.2 × φ 0.7	Ceramic	1608 ~ 3216 Mini Transistor
KGT-M7790-A0XC-T	927-YG200-209A-T	#209A Nozzle Tip (Tip only)			
	927-YG200-201F	#201F Nozzle	0.7 × 0.8	Ceramic	0603 ~ 1005
	927-YG200-201F-T	#201F Nozzle Tip (Tip only)			
	927-YG200-202F	#202F Nozzle	1.0 × 1.7	Ceramic	
	927-YG200-202F-T	#202F Nozzle Tip (Tip only)			

# METAL SQUEEGEE

## Double edge metal squeegee

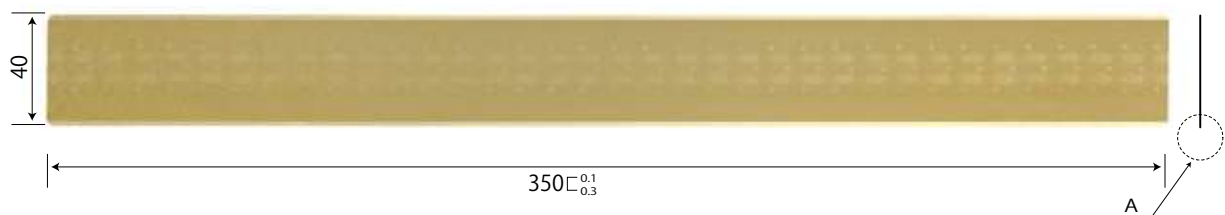


Example :

(Ceramic coating)

Machine name	Parts number
SP60, SP18, SPG	558-0240W-350 Size: 0.2x40x350mm

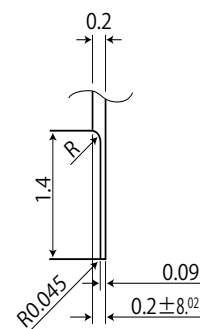
1. Available for all types of machine.  
Panaset, Hitachi, Deck etc.
2. Any length size available
3. High durability
4. Rust free
5. Stencil friendly



### Types of metal squeegee

Available to customized

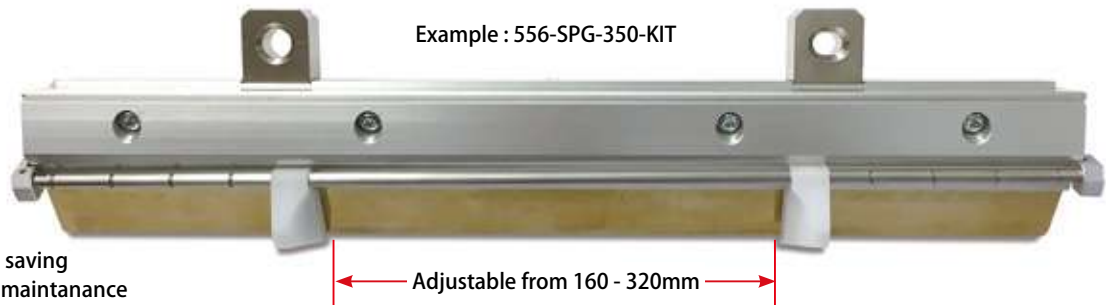
Hole type(optional)



A detail

## MASTER SQUEEGEE KIT

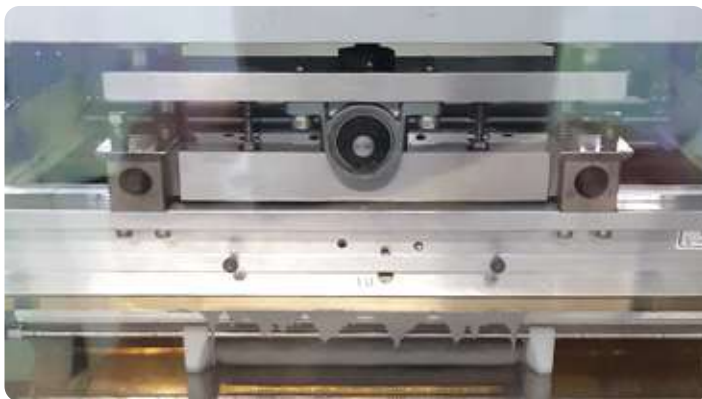
Machine : SPG, SPV, SP18, SP60



- 1. Cost saving
- 2. Easy maintenance
- 3. Available for all type



Example : 556-SP60-350-KIT for SP60

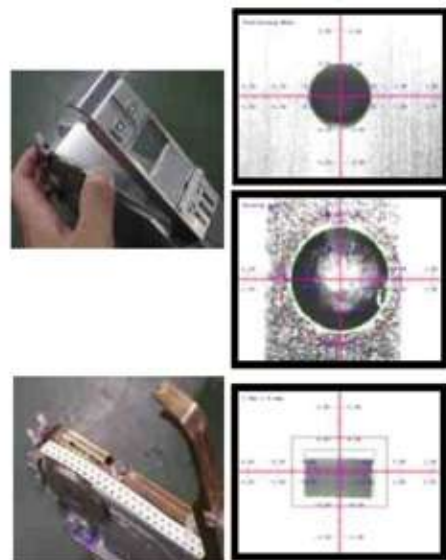
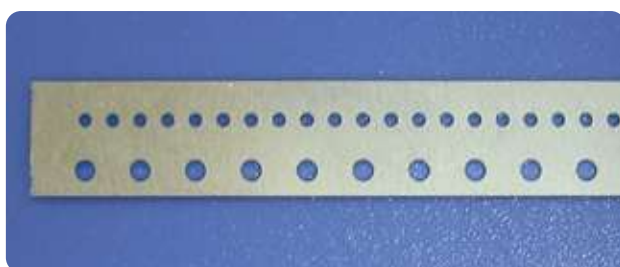


## STEEL TAPE FOR CALIBRATION

Parts name STEEL TAPE (CROSS) Modified type  
 Parts number 863-TS025-8-300-C



Parts name STEEL TAPE (ROUND)  
 Parts number 863-TS025-8-300



## NOZZLE SHAFT CLEANING JIG



CM-16H-SCJ  
CM-12H-SCJ  
CM- 8H-SCJ

CM-16H-SPO  
CM-12H-SPO  
CM- 8H-SPO

Cleaning Sponge : (1pack= 100pcs.)

※ Jig fits for 16H, 12H, and 8H to clean a nozzle shaft Sponge is washable for 2 - 3 times to reuse.

※ Cleaning accuracy is higher than standard cleaning jig

## PCB CLEANING BRUSH UNIT



Brush unit



Blower motor



Filter unit



Power supply



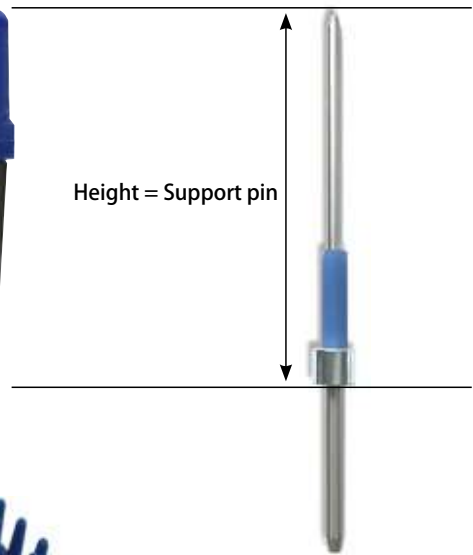
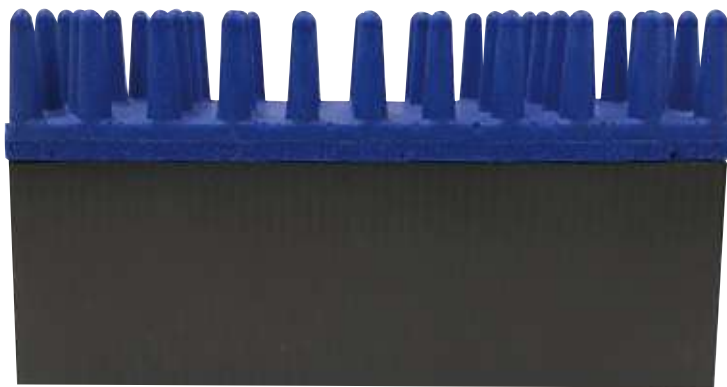
ESD brush

1. Clean dust on PCB before printing
2. Available to install in line machine
3. Replaceable rolling brush & flat brush

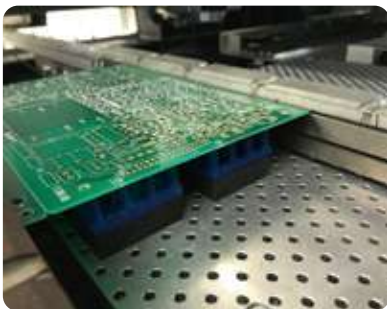
## SUPPORT MAT SET

Adjustable for any type of machine

※ Usable instead of support pin



Part number: TS-20H  
Size: L 125x W 40 x T 20mm



1. Component friendly
2. Available for any position
3. ESD material (urethane foam)
4. Mat can be sold separately

※ Not suitable for printing machine

## BACK UP PIN (MAGNET TYPE)



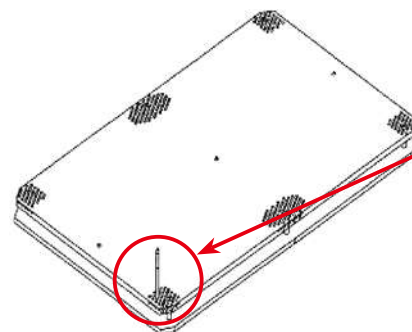
Back up pin with magnet  
Parts number : CM-BP-MG

※ No necessary O-ring for magnet type

The rise of the pin can be suppressed owing to the sticky things (flux) and the deterioration of O-ring.



Magnet



Standard type

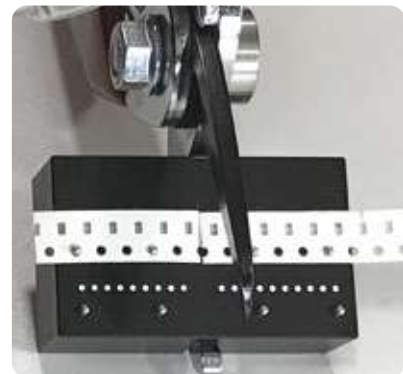


## SPLICING JIG MODIFICATION

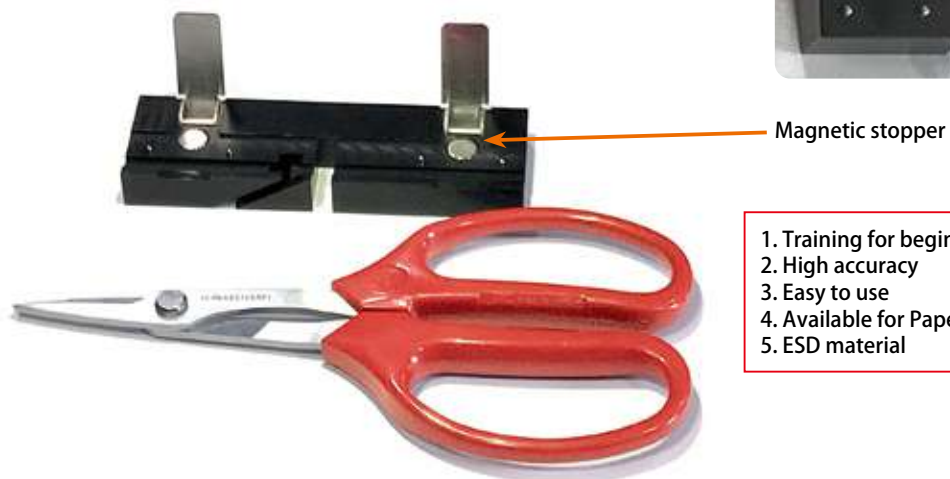
Parts number : TSK108-V2



1. High accuracy
2. Easy to use
3. Recommend for beginner
4. Available for 2 & 4 mm pitch
5. ESD material



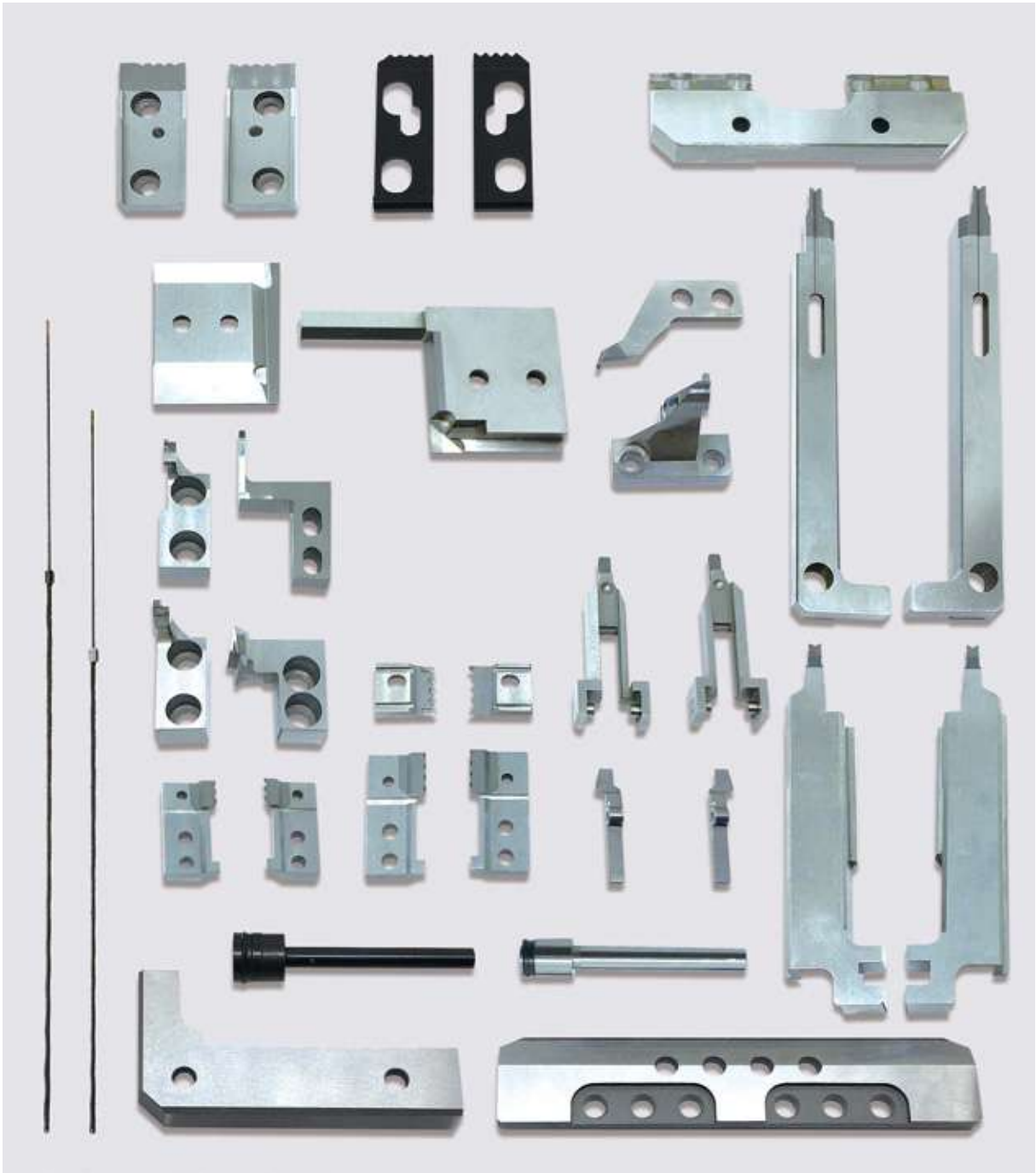
Parts number : TPS-110-S



1. Training for beginner
2. High accuracy
3. Easy to use
4. Available for Paper & Emboss
5. ESD material



**AUTO INSERTION PARTS**



**VACUUM NOZZLE / DISPENSER NOZZLE**





## **TOKYO SEISAKUSHO Co.,Ltd**

3-25-10 Kamiya, Kita-ku, Tokyo, 115-0043 Japan  
TEL. +81-3-3902-1316 FAX. +81-3-3903-2913  
<http://www.tokyoseisakusho.co.jp>

**Kawaguchi Factory (Japan)**  
**Kawaguchi Plating Factory (Japan)**  
**Komagane Factory (Japan)**

### **Associate Companies**

**Tokyo Seisakusho(Asia) Co., Ltd. (Thailand)**

**TS Corporation(Asia) Co., Ltd. (Thailand)**

455/6 Moo 1,Rattanak Rd.,  
T.Bangbo, A.Bangbo, Samutprakarn 10560  
TEL/FAX : +66(0)2708-4833

**Tokyo Seisakusho Vietnam Co., Ltd. (Ho Chi Minh, Vietnam)**

77 Nguyen Truong To Street, Ward 12, District 4, HCMC  
TEL/FAX : +84-(0)28-3826 8290 / FAX : +84-(0)28-3826 8292

**SHANGHAI TS TRADING CO., LTD (China)**

Rm.2503C,Huaihai China Tower,  
885 Renmin Rd., Shanghai  
TEL:+86-21-63261600 / FAX:+86-21-63261663

**TAKADASEIKI Co., Ltd. (Japan)**